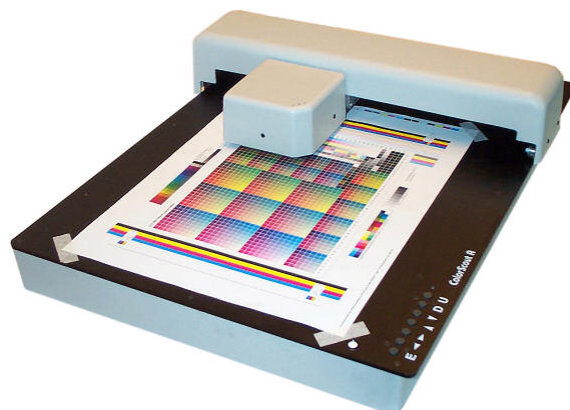


ColorScout AX

The ColorScout AX is a high speed, high precision Automatic Chart Scanspectrophotometer on air cushion basis with air cooled high performance optical light probe. This air cushion technology ensures a preservative treatment of the charts. The continuous airflow also helps to keep the charts free from dust.

The scanning time for the IT8.7/3 chart with 928 patches is about 4.5 min, for the ECI2002 chart with 1485 patches it is about 7 min. The maximum chart format is A3+. The charts can be designed in any format.



Technical Data of the ColorScout AX

Measuring time:

IT8.7/3 target	approximately 4.5 min for 928 patches
ECI 2002 target	approximately 7.0 min for 1485 patches

Technical Data of the XY-table part

Maximal usable area	440 mm x 360 mm
Data interface	serial / USB adaptor
Power supply	100-240 V, 50/60 Hz
Dimensions	700 mm x 500 mm x 170 mm
Weight	approximately 17 kg

Technical Data of the spectrometer part

Spectral module	monolithic spectrometer module with focusing echelette diffraction grating, quartz fiber optic, 256 elements photo diode line, 16 bit A/D-conversion, no moving parts
Spectral range	380 to 780nm
Optical resolution	9 nm
Sampling resolution	3.5 nm (corresponding to 115 Bands)
Modi	remission
Sensor geometry	45/0° circular illumination optics
Aperture diameter	3.5 mm
Light source	tungsten, gas filled, illumination type A
Measuring time:	
remission	< 0.1 s (< 0.3 s positioning included)
Measuring range	density DIN 16536: D 0.0 - 2.5
Inter-instrument agreement	typical 0.4 dE on BCRA tiles
Linearity	±0.01 D
Short term repeatability	±0.03 dE across 10 measurements on white
Density repeatability	±0.01 D
Measuring parameters	
White reference	absolute, relative
Illumination type	A, B, C, E, D50, D55, D65, D75, arbitrary Dxx-illumination, G, P, Xe, F1 .. F12
Observation angle	2°, 10°
Density norms	DIN 16536, DIN 16536-NB, ANSI Status A, ANSI Status T, ANSI Status E, ANSI Status M, ANSI Status I
Color metrics	CIE-XYZ, CIE-Lab, CIE-xyY, CIE-Luv

Supplied software (requiring Windows 95/98, NT 4.0, 2000 or higher)

Densitometry Density, L*a*b*, dE*, XYZ, xyY, adjustment of slope and Yule-Nielsen factor
 Supports color profiling Reading of charts (e.g. IT8.7/3-Charts, ECI2002-Charts) automatically. Creating charts.

More members of the ColorScout A family:

ColorScout A+ for ColorScout S



ColorScout A+ for EyeOne



ColorScout A+ for Spectrolino



ColorScout A+ for X-Rite



ColorScout A+ for gloss



Primary and secondary color reference!

The ColorReference12 can be used to compare, check and calibrate colour measuring instruments. This is e.g. a reference to compare spectrophotometers. The primary reference is certificated by the BAM (Bundesamt für Materialforschung und -prüfung / Federal Institute for Materials Research and Testing).

The ColorReference12 consists of 12 particularly selected, ageresisting, volumestraypoor colors.



DigiDens-Densitometer-Family

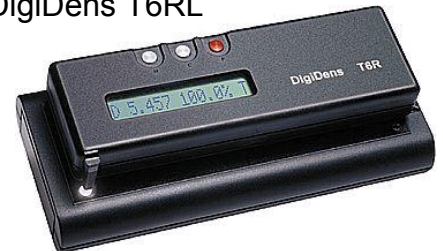
The densitometers to measure:
- bw-reflection and -transmission
- color-reflection and bw-transmission

Available:
- with or without light source for transmission
- with or without serial interface

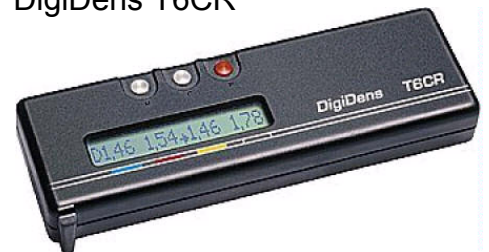
DigiDens T6R



DigiDens T6RL



DigiDens T6CR



ColorPartner GmbH
Holzkoppelweg 5
24118 Kiel
Germany

Phone: ++49-431-200878-0
Fax: ++49-431-200878-9
Email: info@ColorPartner.de
Internet: www.ColorPartner.de

Persons of contact:

H. Wolfgang Schulz WS@colorpartner.de
H. Ingmar Brumm IB@colorpartner.de
H. Karsten Höfer KH@colorpartner.de